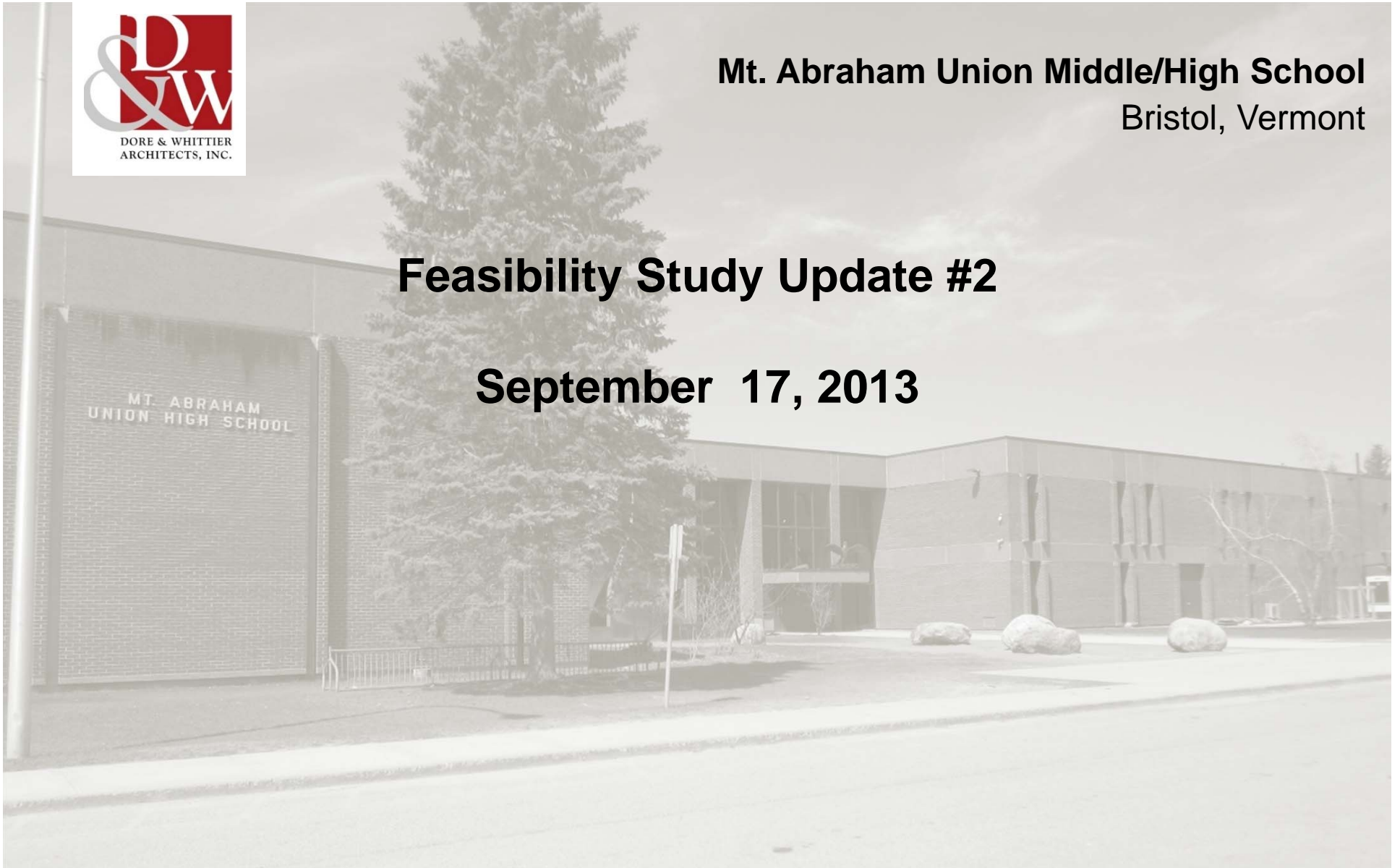




Mt. Abraham Union Middle/High School
Bristol, Vermont

Feasibility Study Update #2

September 17, 2013





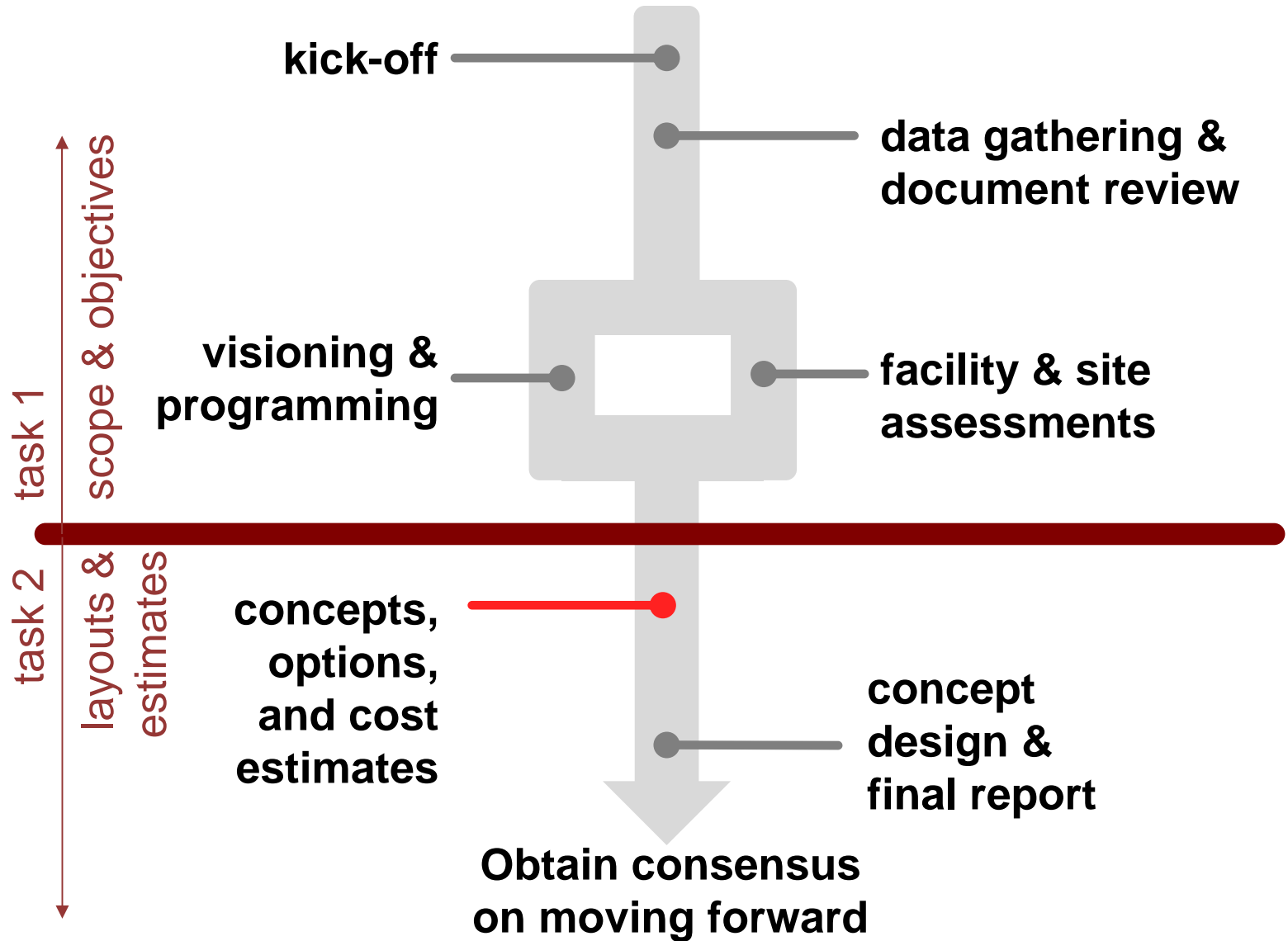
agenda

- **Process and Approach Overview**
- **Slideshow: Existing Conditions**
- **Educational Programming Update**
- **Design Concepts**
- **Comments and Questions**

process and approach



process and approach





Lobby and Overlook



existing conditions



Cafeterias

existing conditions



Classrooms

- **Tandem Classrooms**
- **Lack of or no natural light**
- **Moveable partitions; acoustics**

existing conditions



Science Labs

existing conditions



Metal Shop



Auditorium



**Gymnasium
and Auxiliary Spaces**





educational programming





Educational Programming:

Work Completed to Date:

- Conducted a staff wide survey
- Met with Administrative Team and Department Heads to discuss program needs
- Completed analysis of current room utilization and adjacencies
- Developed Educational Specifications
- Developed conceptual options with project goals in mind





Established Project Objectives:

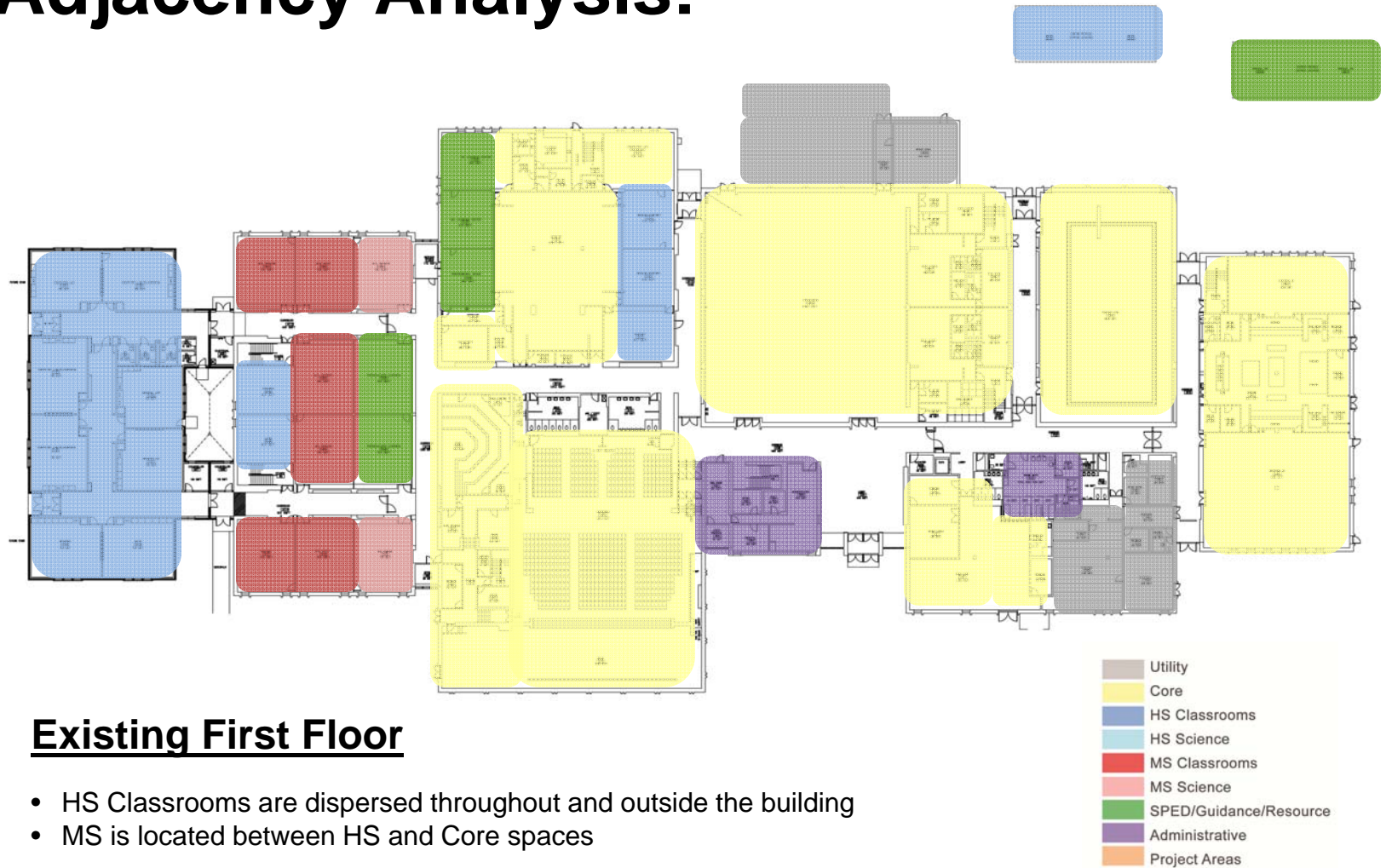
Educational Goals:

- Meet needs of MS and HS educational program
- 21st Century Educational spaces
- Provide appropriate adjacencies
- Natural light to all classrooms; eliminate tandem classrooms
- Consolidate campus

Site and Building Goals:

- Code, Life Safety and ADA improvements
- Update building infrastructure (M/E/P/FP) and improve energy efficiency (occ. sensors, low flow fixtures)
- Improve quality of spaces with natural light, updated finishes, adequate ventilation and address deferred maintenance

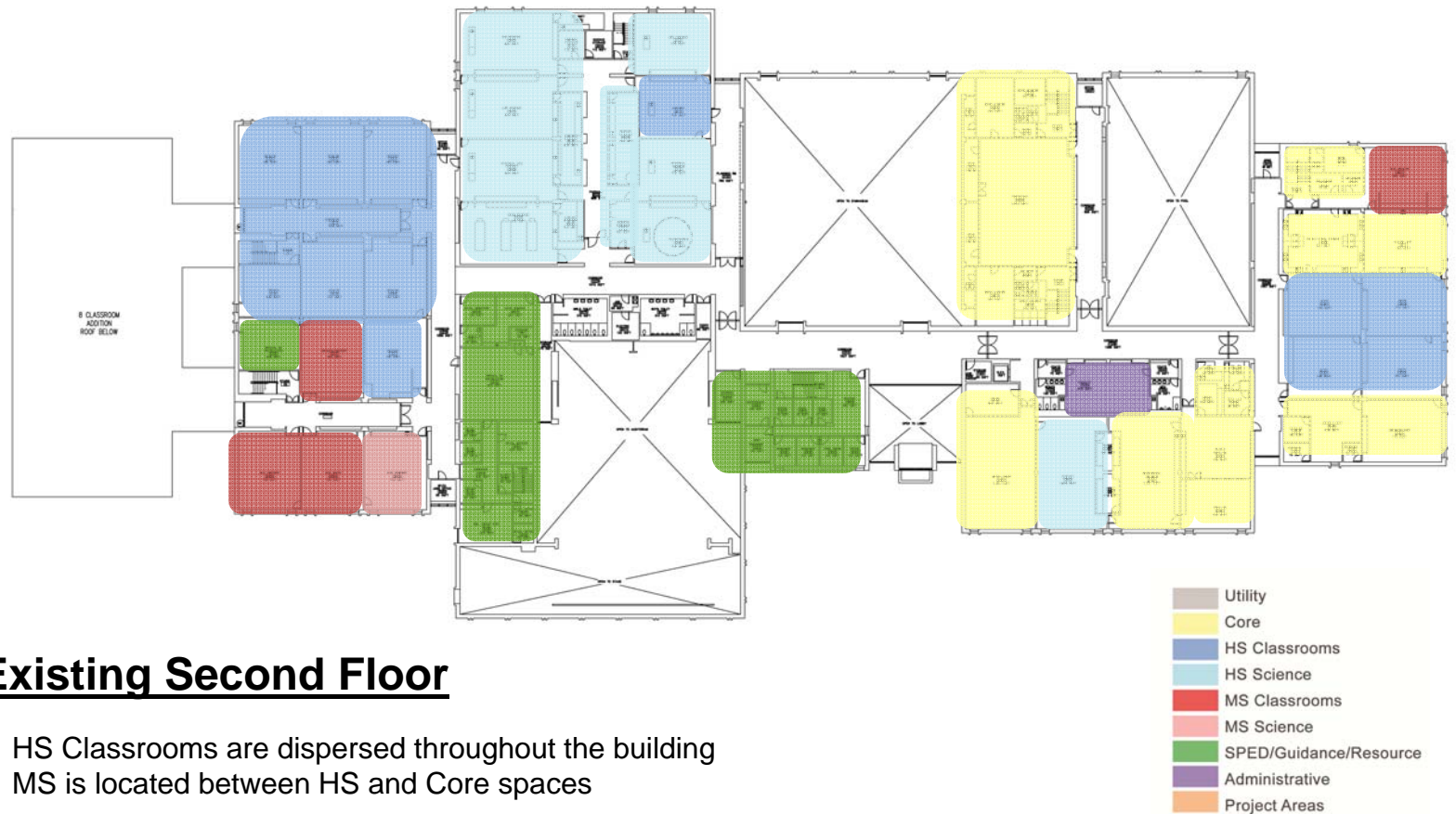
Adjacency Analysis:



Existing First Floor

- HS Classrooms are dispersed throughout and outside the building
- MS is located between HS and Core spaces

Adjacency Analysis:



Existing Second Floor

- HS Classrooms are dispersed throughout the building
- MS is located between HS and Core spaces



Schedule Analysis:

Current Room Utilization:

- Approximately 72% room utilization at the High School
- Approximately 41% room utilization at the Middle School.

For greater efficiency (staffing, energy use, etc.), 85% room utilization rate is recommended.

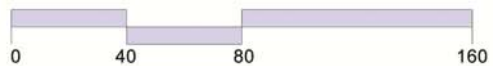
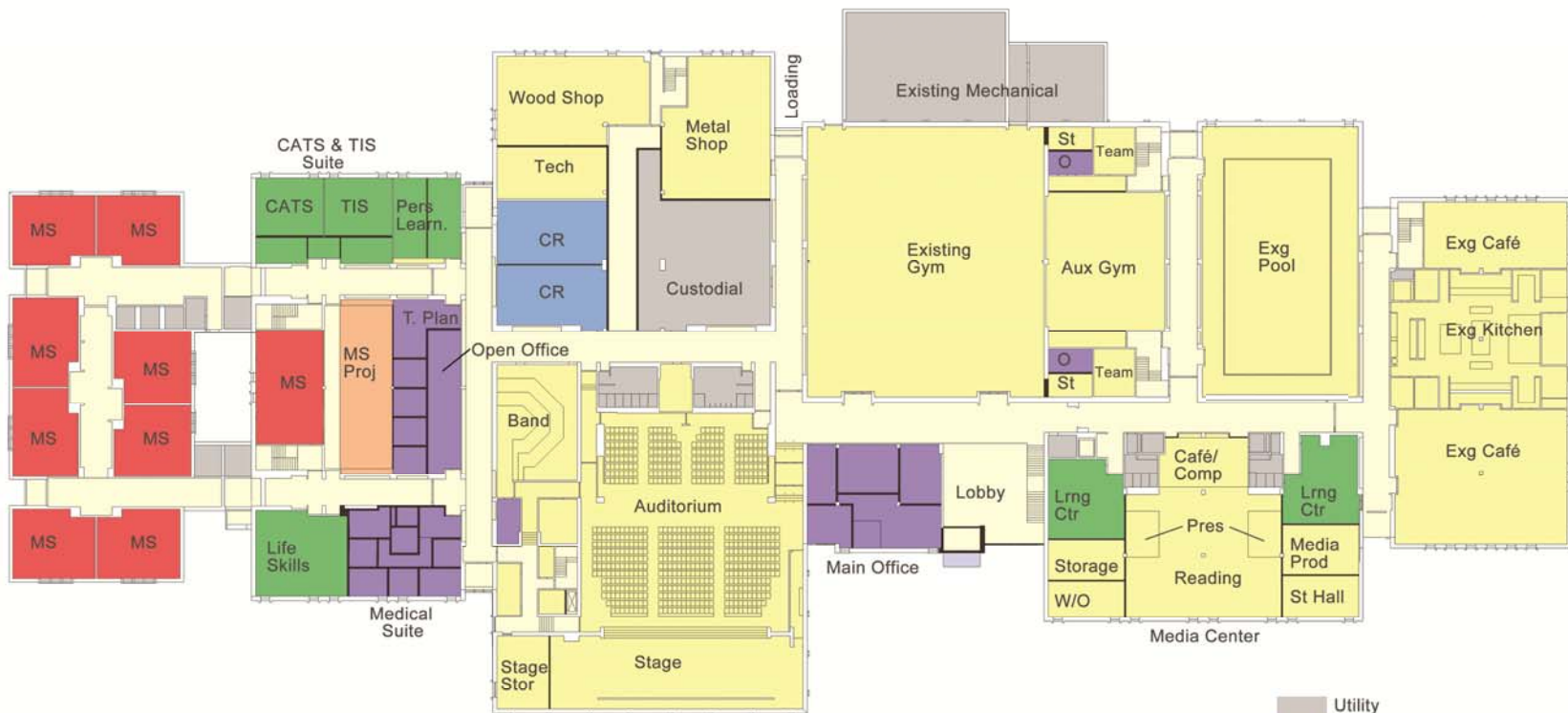


Space Summary:

	Existing Classroom Counts:	Proposed Classroom Counts:
General Classrooms – HS	25 (avg. @ 690 SF each)	18 (@ 750 SF each)
General Classrooms – MS	10 (avg. @ 764 SF each)	9 (@ 750 SF each)
Science Labs - HS	8 (avg. @ 792 SF each)	5 (@ 1,200 SF each)
Science Labs – MS	3 (avg. @ 753 SF each)	2 (@ 1,000 SF each)
Technical/Vocational	8 (Includes Wood shop, Metal Shop, 2 Comp. labs, Tech Ed rooms) Total: 10,871 SF	5 (Includes wood shop, metal shop, Tech Ed., 2-1500 SF project labs) Total: 7,800 SF
Art	4 Total: 2,964 SF	2 Total: 2,700 SF

design concepts





- Utility
- Core
- HS Classrooms
- HS Science
- MS Classrooms
- MS Science
- SPED/Guidance/Resource
- Administrative
- Project Areas

Concept 1
MT ABRAHAM UNION HIGH SCHOOL

First Floor

September 5, 2013





- Utility
- Core
- HS Classrooms
- HS Science
- MS Classrooms
- MS Science
- SPED/Guidance/Resource
- Administrative
- Project Areas

Concept 2
MT ABRAHAM UNION HIGH SCHOOL

Second Floor

September 11, 2013

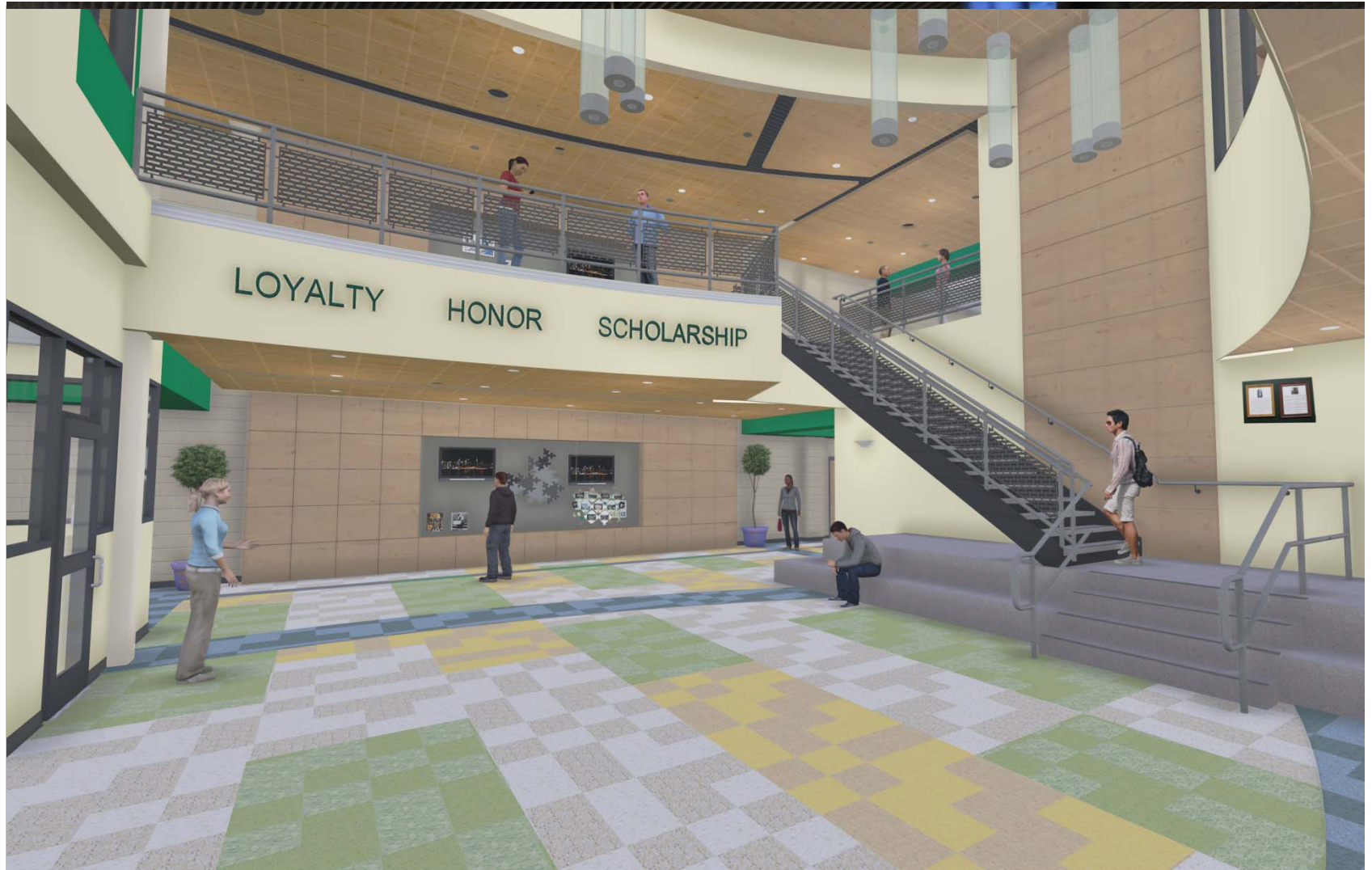


before and after



Main Lobby

before and after



Main Lobby

before and after



Auditorium

before and after



Auditorium

before and after



Science Lab

before and after



Science Lab

before and after



Wood Shop

before and after



Wood Shop

before and after



Cafeteria



before and after



Cafeteria

before and after



Library

before and after



Library

next steps





Next Steps:

September 2013 – October 2013

- **Cost estimate for options at Oct 1st meeting**
- **Seek consensus on moving forward**
- **Public outreach**



Questions

Questions, Comments, Feedback...